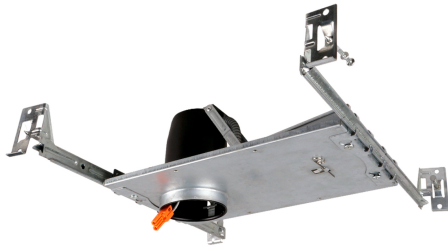


LED200ICQA / LED200ICRQA

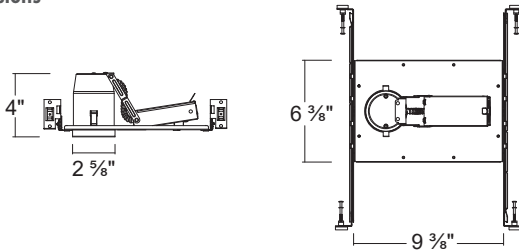
2" IC Air-Tight LED Dedicatd New construction & Remodel Housing



LED200ICQA
New construction



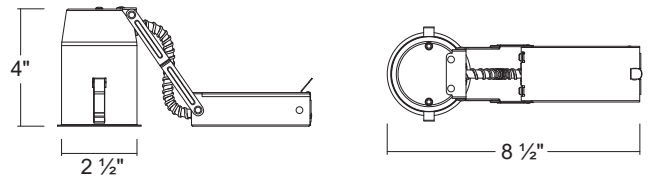
Dimensions



LED200ICRQA
Remodel



Dimensions



SPECIFICATION

Plaster Frame

- Galvanized steel construction
- Housing with J-Box can be from separate the frame, easily to connect wires

Frame Bar Hanger

- Pre-installed Real nail easily installs in regular lumber, engineered lumber
- Bar Hangers are adjustable from 13-5/8" to 25" and can be repositioned 90 degree on plaster frame

Listings

- cULus Listed for Damp Location
- cULus Listed for Feed Through
- Certified under ASTM-E283 for Air tight construction

Remodel Brackets

- Two remodel Brackets secure housing and accommodates 1/2" and 5/8" ceiling materials.

Junction Box

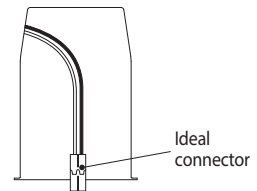
- Listed for through branch circuit wiring
- Contains two 3/8" knockouts

ORDERING INFORMATION

Model No.	Description
LED200ICQA	2" IC Air-Tight Dedicated New construction Housing
LED200ICRQA	2" IC Air-Tight Dedicated Remodel Housing

CONNECTOR

MODEL NO.
LED200ICQA
LED200ICRQA



COMPATIBLE TRIMS

Model NO.	Description
LRKT200-5CCT	2 inch Selectable 5 CCT LED Round Smooth Retrofit kit
LRKT203-5CCT	2 inch Selectable 5 CCT LED Round Baffle Retrofit kit
LRKT240-5CCT	2 inch Selectable 5 CCT LED Square Smooth Retrofit kit
LRKT243-5CCT	2 inch Selectable 5 CCT LED Square Baffle Retrofit kit
LRKT207-5CCT	2 inch Selectable 5 CCT LED Round Gimbal Retrofit kit
LRKT247-5CCT	2 inch Selectable 5 CCT LED Square Gimbal Retrofit kit